

# ZP13-H2

Ø35mm hinge with a H=2 mounting plate, designed for flush doors



**Reference:** ZP13-H2

**EAN Code:**

**Material:** Nickel coated steel

**Cup Type:** fi 35mm

**EURO screws:** NO

**Caps:** NO

**Mounting plate type:** slide-on

**Mounting plate height:** H2

**Designed for:** flush doors

**Soft-closing:** NO

**Opening Angle:** 110°

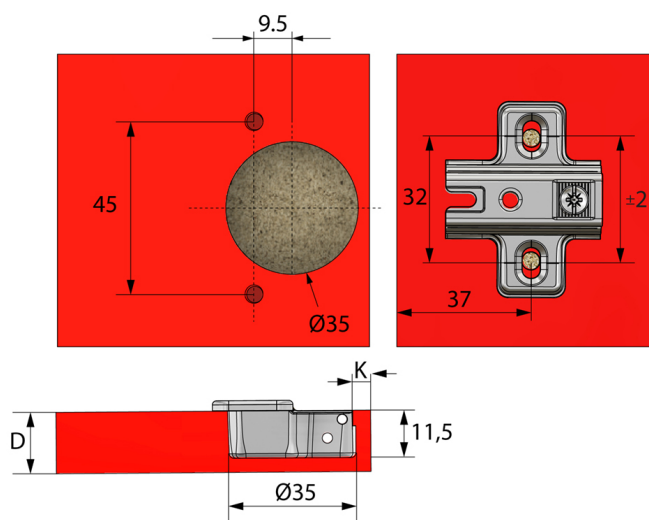
**Cam adjustable hinge arm:** NO

**Cam adjustable mounting plate:** NO

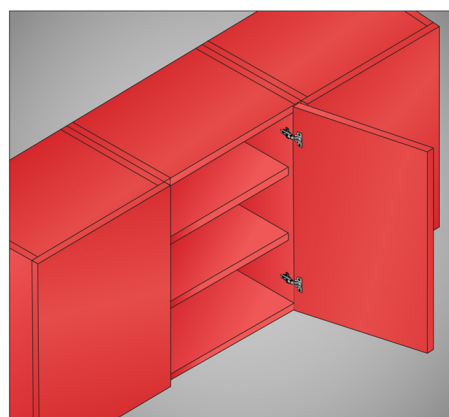
**Spring type:** One-way

**More info**  
**Download**

Wymiary montażowe puszek i prowadnika  
*Drilling dimensions for the hinge cup and mounting plate*



Przykład zastosowania  
*Application example*



# Zależność odległości (K) od odległości (A) i wysokości prowadnika (H)

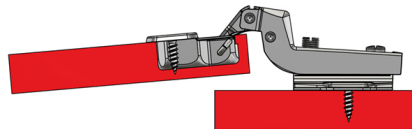
Dependency of distance (K) from distance (A) and plate height (H)

A \ K	3	4	5	6	7
H	2	1	0	-1	-2

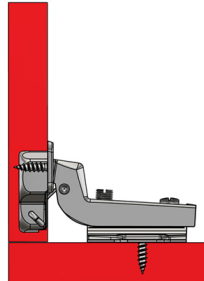
A - odległość pomiędzy bokiem szafki a frontem / distance between the side board and the door

K - odległość puszek zawiasu od krawędzi frontu / distance between the hinge cup and door edge

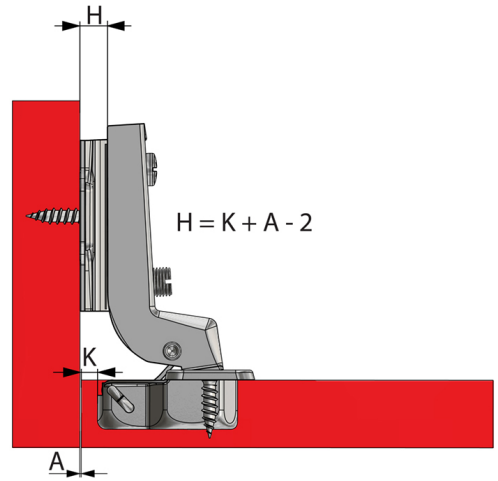
H - wysokość prowadnika / mounting plate height



drzwi otwarte / door open



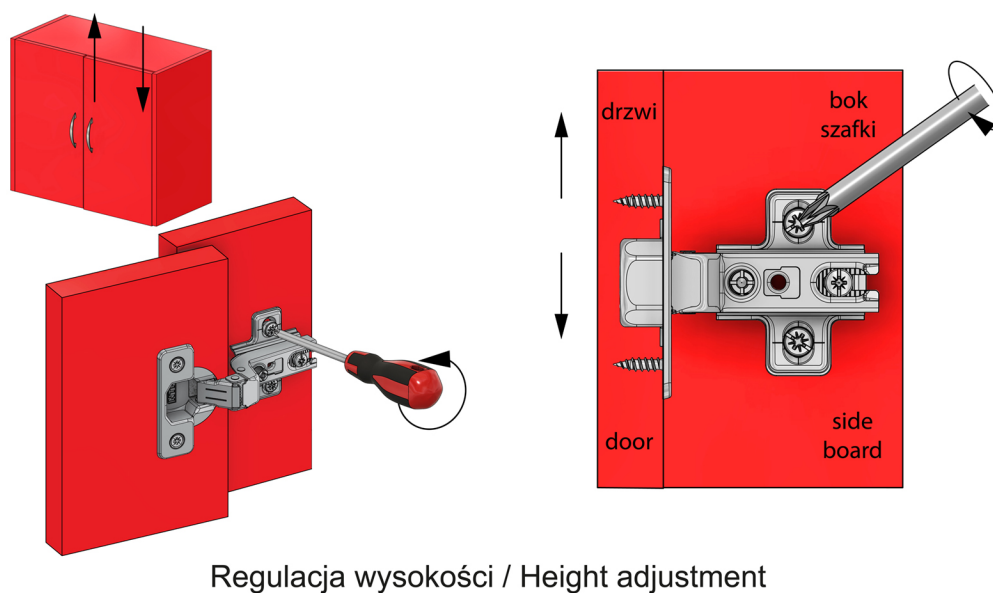
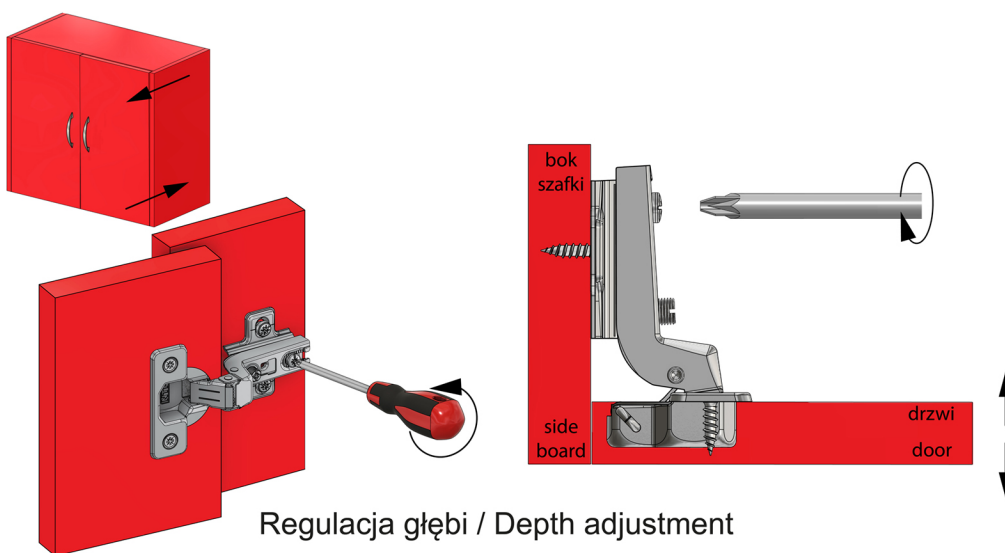
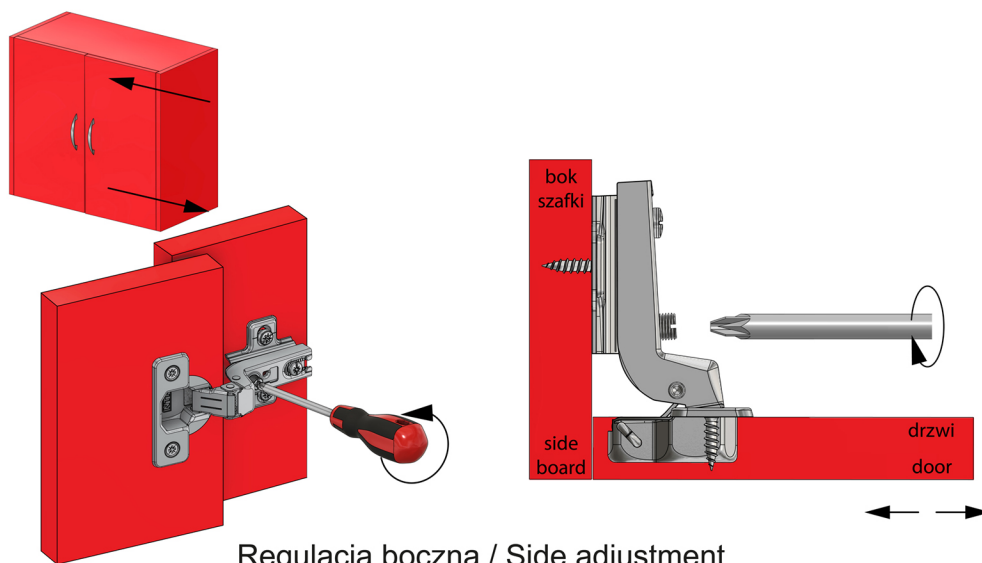
drzwi zamknięte / door close



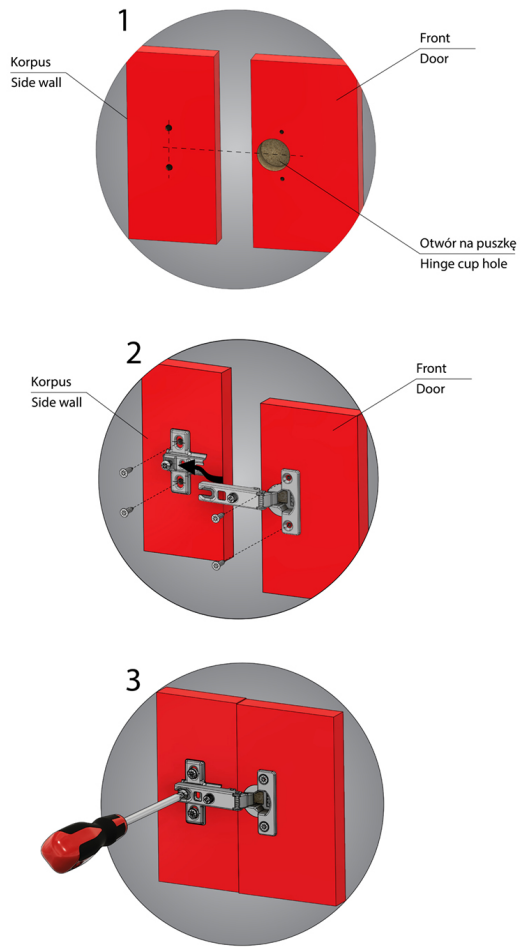


# Regulacja Zawiasu w trzech kierunkach

*Hinge three dimensional adjustment*



## Montaż zawiasu slide-on Slide-on hinge installation



## Dobór ilości zawiasów w zależności od wysokości frontu Choosing hinge amount according to door height

