

# ZPC25R-H2R-1Z



Ø35mm, 135° angular hinge with H2 mounting plate

**Reference:** ZPC25R-H2R-1Z

**EAN Code:**

**Material:** Nickel coated steel

**Cup Type:** fi 35mm

**EURO screws:** NO

**Caps:** YES

**Mounting plate type:** clip-on

**Mounting plate height:** H2

**Designed for:** angled doors

**Soft-closing:** NO

**Opening Angle:** 135°

**Cam adjustable hinge arm:** YES

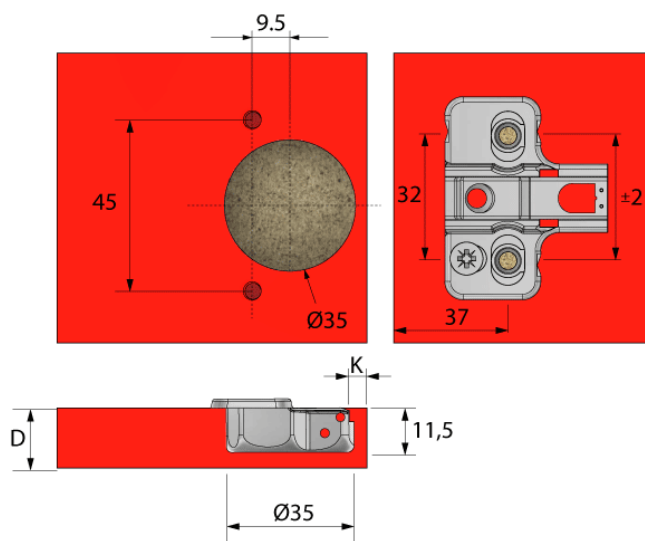
**Cam adjustable mounting plate:** YES



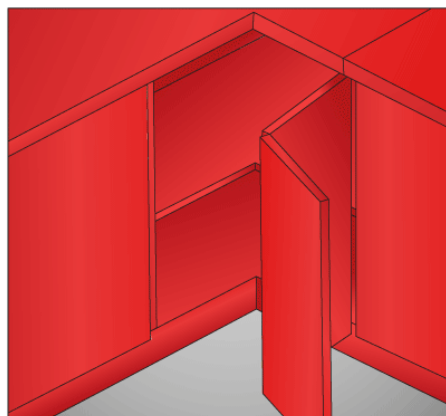
**LUX**

**More info**  
**Download**

**Wymiary montażowe puszek i prowadnika**  
*Drilling dimensions for the hinge cup and mounting plate*



**Przykład zastosowania**  
*Application example*



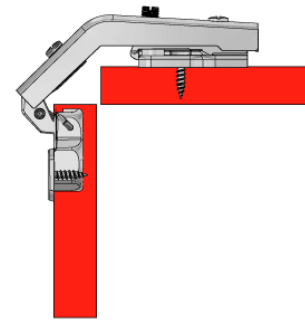
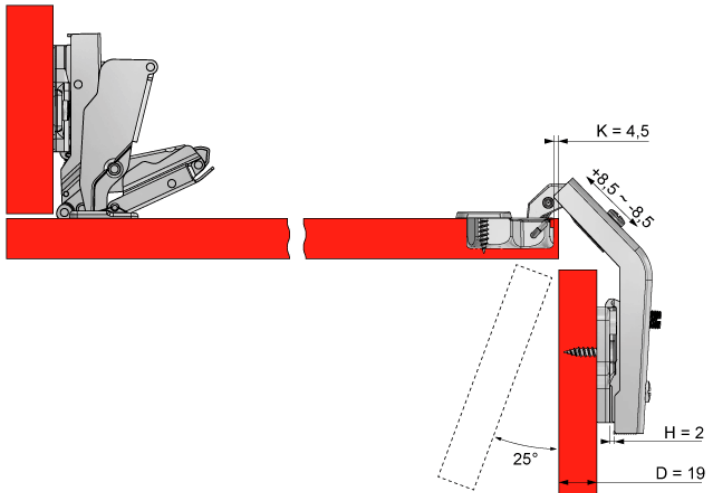
## Przykład zastosowania

Application example

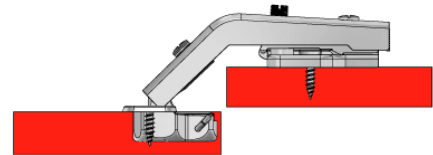
*D* - grubość płyty / board thickness

*K* - odległość puszek zawiasu od krawędzi frontu / distance between the hinge cup and door edge

*H* - wysokość prowadnika / mounting plate height



drzwi zamknięte / door closed

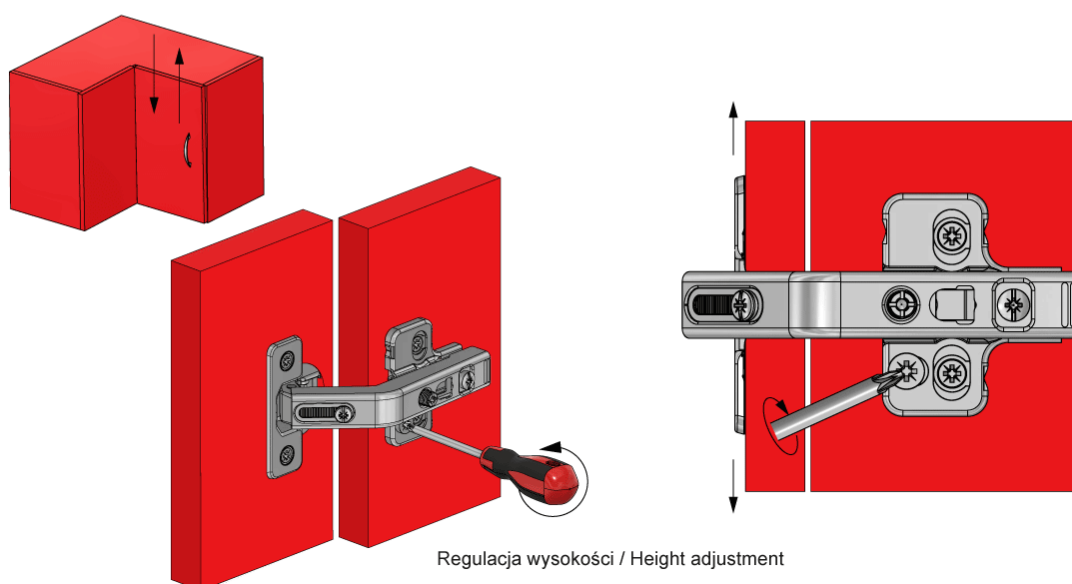
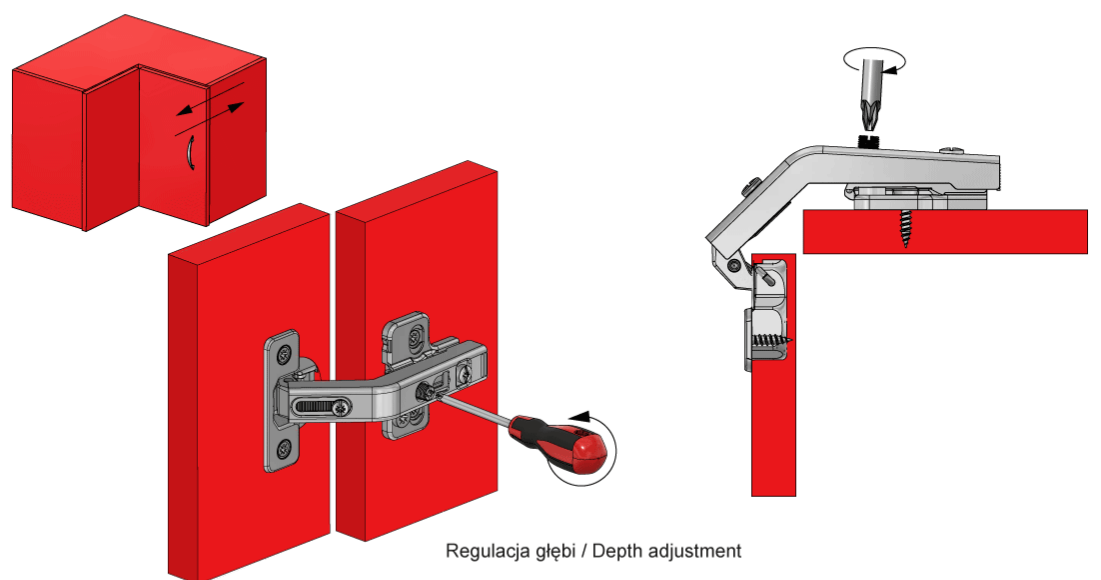
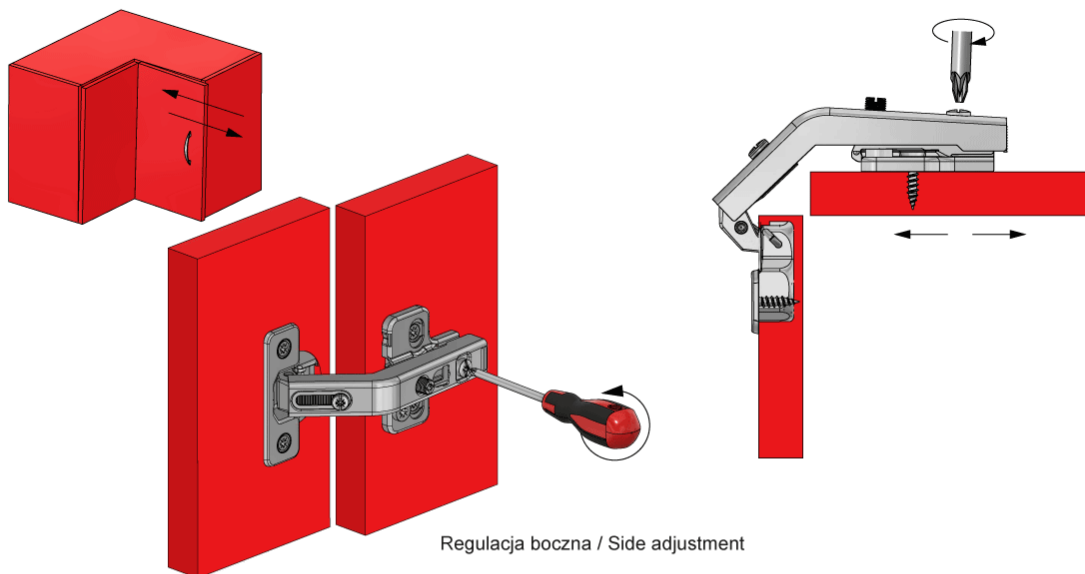


drzwi otwarte / door opened

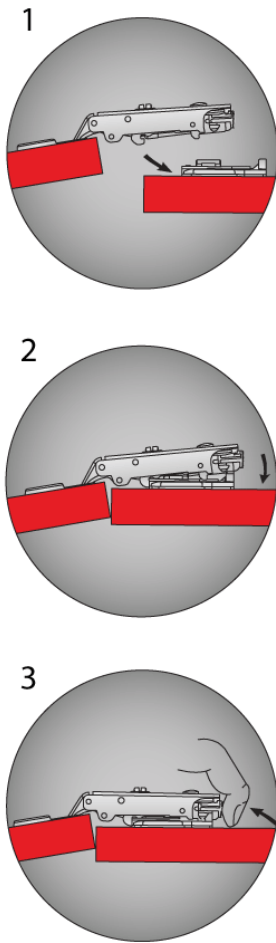


# Regulacja zawiasu w trzech kierunkach

## Hinge three dimensional adjustment



## Montaż zawiasu clip-on Clip-on hinge installation



## Dobór ilości zawiasów w zależności od wysokości frontu Choosing hinge amount according to door height

